



# Loewe **stellar** alu black + lava

The craft design TV with Loewe dual channel dr+

- High performance OLED module designed, engineered and tailored by Loewe in Kronach
- Dual channel dr+ system with double triple tuner and SSD for multi view and multi recording
- Full support of 4x HDMI 2.1 and Ultra HD @ 144 Hz VRR for high-speed gaming
- Rich variety of smart streaming apps and VOD services with Tizen OS
- Powerful integrated sound bar for superior audio performance
- Optional ultra-slim wall mount or motorized floor stand
- Sophisticated design with real materials and magic moments of light and motion



LOEWE. was found by the Loewe brothers as Radio Frequenz GmbH in Berlin in 1923.  
Today we still design, develop and produce consumer electronics – Made in Germany.

Data sheet  
Loewe **stellar**  
March 2025

**LOEWE.**  
Home of Excellence.

www.loewe.tv

# Loewe **stellar** alu black + lava

The craft design TV with Loewe dual channel dr+



## Home-made OLED module

The latest generation and technology of OLED open cells with master black polarizer offer highest brightness and unparalleled motion picture performance in Ultra HD resolution.

The OLED module is designed, engineered and tailored by Loewe in Kronach with alu-compound back-forming, massive alu frame and real concrete or aluminum back-cover.

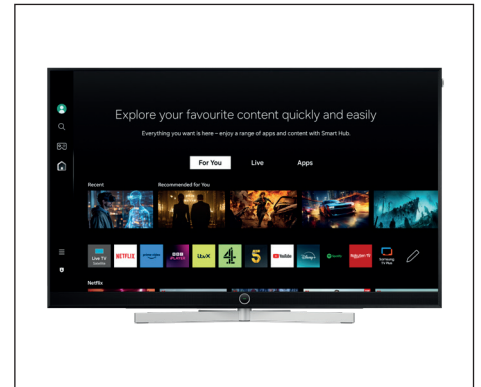
Pre-calibrated in our factory and supporting HDR 10+ Adaptive, these displays meet all relevant filmmaker picture and colour standards for a perfectly natural and impressive movie reproduction.



## Loewe dual channel dr+

Equipped with a dual channel chassis, double triple-tuners and a large SSD, the Loewe dr+ system offers multiple viewing and recording possibilities from EPG programmed recording to spontaneous timeshift functions.

Tuners for DVB-T2/C/S2 HD and a easy accessible CI slot support various reception and recording scenarios. The Solid State Drive is perfect for video applications and both energy efficient, extra fast and absolutely noise-less for maximum comfort.



## Tizen OS

The premium Tizen OS version 8 is a most convenient and fast smart operating system. The app store offers an extra-large selection of smart apps and a rich variety of video-on-demand services, including e.g. Netflix, YouTube, Disney+ and more.

The system is also compatible with advanced networking features: The support of broad-used dlna, Miracast and others allow comfortable content sharing and control via the home network.

Flexible connectivity with HDMI 2.1 including Ultra HD @ 144 Hz VRR ensures full support of latest game consoles on all four HDMI inputs.



## Integrated sound bar and magic.light

An impressive 80 watts front-firing soundbar behind a high-gloss black spray painted metal speaker grill in harmony together with the Loewe signature.ring and the Loewe magic.light - for a discretely welcome and farewell animation or an atmospheric illumination during movie watching.

Simply adjust it as desired in any colour of the rainbow, at different brightness and saturation levels, by the touch of a button on the Loewe stellar remote.



## Design craftsmanship

Sophisticated craft design and clever construction details from the in-house Loewe design and innovation studio.

Created with selected real materials like a four-sided brushed full aluminum frame in a diamond-cut shape, real glas-fiber enforced concrete or aluminum on the back panel and a rotatable table stand made of massive aluminum with a fine hairline-brushed finish. The real concrete back-cover gives each TV its unique fingerprint.

Cooled lava is milled into the finest rock flour to colour the concrete black. It is then additionally protected by a separately applied coating of sealer. The fine brushed aluminium profile of the display frame is anodised in a special process to a glossy black finish.



## Sophisticated setup solutions

The Loewe magic.motion feature rotates the TV set on the motorized optional Loewe floor stand motor stellar by a touch of a button on the remote control up to 45° left or right - absolutely silently and smooth.

Of course the floor stand is also made of massive aluminum with a fine hairline-brushed finish. The optional floor2ceiling stand creates a spectacular free-floating 360° presentation, the wall mount stellar allows an extra slim wall solution.

All connections are hidden, and all cables are well guided and hidden by the integrated cable management plus cable covers in the all black rear cabinet. The solid VESA bolts support any mounting solution.

# Loewe **stellar** alu black + lava

The craft design TV with Loewe dual channel dr+

---

## Achievements

---



**“The TV model stellar shines with latest display technology, powerful hardware and new design language which lift an OLED TV in new dimension.”**

International Forum Design, Spring 2024, about Loewe stellar  
iF DESIGN AWARD 2024

---



reddot winner 2024

**“The Loewe stellar is an OLED television that, thanks to the modular construction of its display module, offers a multitude of possibilities for material combinations.”**

Red Dot, Spring 2024, about Loewe stellar  
reddot winner 2024

---



**“The Loewe stellar has an extraordinary extraordinary look with a perfect 360-degree design, consistent and unmistakable for all display sizes.”**

audiovision magazine, edition 10/2024, about Loewe stellar  
BEST DESIGN

---



**“Their sophisticated design with selected materials and magical moments of light and motion make them visual highlights in any interior.”**

Satvision magazine, edition 01/2025, about Loewe stellar  
SATVISION DESIGN AWARD

---



**“Forged for eternity: With the stellar, Loewe skilfully implements current technology trends: classic TV virtues, an integrated SSD, a powerful panel and an extraordinary housing design make this television a real design and technology statement.”**

HDTV magazine, edition 1/2025, about Loewe stellar 65 dr+  
Test result: OUTSTANDING  
Ratings: Highlight | Home Cinema Tip | Gaming Tip | Design Innovation

---



**“If you don't want just any random TV set in your home and you have a preference for something special, for extravagant design and for modern technology, the stellar models have it all.”**

Euronics Trendblog, 10.02.2025, about Loewe stellar



# Loewe **stellar** alu black + lava

The craft design TV with Loewe dual channel dr+

---

## Achievements

---



**“From the conception of the design, to the development of hardware and software, construction, prototyping and final assembly final assembly of the stellar TV models all development steps at Loewe in Kronach.”**

audiovision magazine, edition 10/2024, about Loewe stellar 65 dr+  
BEST OLED

---



**“The integrated, front-firing soundbar with 10 drivers, 80 watts of total music power and Dolby Atmos sits behind a high-gloss lacquered metal grill and ensures best speech intelligibility, a wide stereo stereo stage and dynamic film sound.”**

audiovision magazine, edition 10/2024, about Loewe stellar 65 dr+  
BEST SOUND

---



**“Loewe stellar is not only luxury in terms of its design, but also does its utmost technically to earn a place in the hall of fame of TV legends.”**

connect magazine, edition 01/2025, about Loewe stellar 65 dr+  
Test result: OUTSTANDING

---



**“In addition to the exterior, the excellent picture quality, in which the high peak brightness and perfect black level ensure a dynamic contrast display, as well as the features (...) are impressive.”**

Satvision magazine, edition 02/2025, about Loewe stellar 55 dr+  
Test result: VERY GOOD

---



**“Made in Germany: The top model is perfectly finished. (...) Only the best is built into the Loewe stellar. (...) It delivers truly excellent pictures. (...) The high price is justified by top marks in all categories.”**

Guter Rat magazine, edition 02/2025, about Loewe stellar 55 dr+  
Test result: VERY GOOD

---



**“With the stellar 77 dr+, Loewe has launched a television that is exceptional in many aspects and sets new audiovisual and quality standards.”**

audiovision magazine, 03/2025, about stellar 77 dr+  
Test result: VERY GOOD  
Ratings: Highlight, Referenz

# Loewe **stellar** alu black + lava

The craft design TV with Loewe dual channel dr+

---

## TV

---

### Loewe stellar 42-65

Scope of delivery includes TV set with integrated sound bar and table stand

stellar 65: W\* x H x PD / TD = 146,8 x 94,0 x 4,7 / 27,5

stellar 55: W\* x H x PD / TD = 124,9 x 81,7 x 4,7 / 27,5

stellar 48: W\* x H x PD / TD = 109,3 x 72,9 x 4,7 / 19,5

stellar 42: W\* x H x PD / TD = 95,8 x 65,4 x 4,7 / 19,5

table stand manually rotatable (+/- 45°), concealed cable routing

 alu black + lava

Model	Article
stellar 65	63470
stellar 55	63469
stellar 48	63466
stellar 42	63465



---

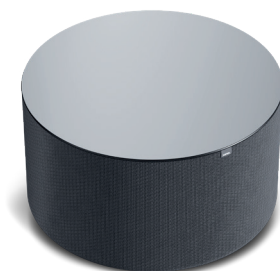
## Subwoofer

---

### Loewe klang sub1

Active wireless subwoofer  
to complement the TV

 basalt grey klang sub1 60610



---

Dimensions in cm: W = width, H = height, PD = product depth, TD = total depth. Technical modifications and errors excepted.  
\* In the area of the side-mounted Loewe clip, the width of the TV set may increase by up to 1 cm, depending on the type of set.

# Loewe **stellar** alu black + lava

The craft design TV with Loewe dual channel dr+

---

## Setup solutions

---

### Stand solutions

#### floor stand motor stellar

stellar 65: W\* x H x PD / TD = 146,8 x 133,2 x 4,7 / 49,1  
stellar 55: W\* x H x PD / TD = 124,9 x 120,9 x 4,7 / 35,2  
stellar 48: W\* x H x PD / TD = 109,3 x 112,1 x 4,7 / 35,2  
stellar 42: W\* x H x PD / TD = 95,8 x 104,6 x 4,7 / 35,2  
motorized rotatable (+/- 45°), concealed cable routing

#### floor2ceiling stand

stellar 65: W\* x H x PD / TD = 146,8 x 220-290 x 4,7 / 15,6  
stellar 55: W\* x H x PD / TD = 124,9 x 220-290 x 4,7 / 15,6  
stellar 48: W\* x H x PD / TD = 109,3 x 220-290 x 4,7 / 15,6  
stellar 42: W\* x H x PD / TD = 95,8 x 220-290 x 4,7 / 15,6  
manually rotatable (+/- 110°), concealed cable routing,  
height adjustable (220-290 cm)

#### floor stand flex (2024)

stellar 65: W\* x H x PD / TD = 146,8 x 129,8 x 4,7 / 54,0  
stellar 55: W\* x H x PD / TD = 124,9 x 117,5 x 4,7 / 54,0  
stellar 48: W\* x H x PD / TD = 109,3 x 108,7 x 4,7 / 54,0  
stellar 42: W\* x H x PD / TD = 95,8 x 101,2 x 4,7 / 54,0  
manually rotatable (+/- 45°), concealed cable routing,  
with or without carrier for accessory tray or soundbar

#### floor stand universal (2024)

stellar 65: W\* x H x PD / TD = 146,8 x 133,8 x 4,7 / 52,5  
stellar 55: W\* x H x PD / TD = 124,9 x 121,6 x 4,7 / 52,5  
stellar 48: W\* x H x PD / TD = 109,3 x 112,8 x 4,7 / 52,5  
stellar 42: W\* x H x PD / TD = 95,8 x 105,2 x 4,7 / 52,5  
manually rotatable (+/- 45°), concealed cable routing



---

Dimensions in cm: W = width, H = height, PD = product depth, TD = total depth. Technical modifications and errors excepted.  
\* In the area of the side-mounted Loewe clip, the width of the TV set may increase by up to 1 cm, depending on the type of set.

# Loewe **stellar** alu black + lava

The craft design TV with Loewe dual channel dr+

---

## Setup solutions

---

### Wall solutions

wall mount stellar

stellar 65: W\* x H x PD / TD = 146,8 x 88,8 x 4,7 / 6,5

stellar 55: W\* x H x PD / TD = 124,9 x 76,5 x 4,7 / 6,5

stellar 48: W\* x H x PD / TD = 109,3 x 67,7 x 4,7 / 6,5

stellar 42: W\* x H x PD / TD = 95,8 x 60,2 x 4,7 / 6,5

flat and tiltable mounting

wall mount universal

stellar 65: W\* x H x PD / TD = 146,8 x 88,8 x 4,7 / 9,0

stellar 55: W\* x H x PD / TD = 124,9 x 76,5 x 4,7 / 9,0

stellar 48: W\* x H x PD / TD = 109,3 x 67,7 x 4,7 / 9,0

stellar 42: W\* x H x PD / TD = 95,8 x 60,2 x 4,7 / 9,0

tiltable mounting

wall mount slim 432

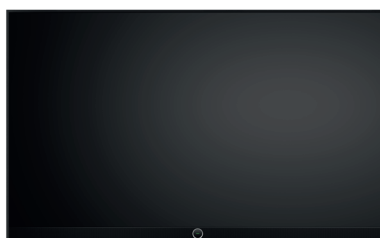
stellar 65: W\* x H x PD / TD = 146,8 x 88,8 x 4,7 / 7,3

stellar 55: W\* x H x PD / TD = 124,9 x 76,5 x 4,7 / 7,3

stellar 48: W\* x H x PD / TD = 109,3 x 67,7 x 4,7 / 7,3

stellar 42: W\* x H x PD / TD = 95,8 x 60,2 x 4,7 / 7,3

flat mounting



---

Dimensions in cm: W = width, H = height, PD = product depth, TD = total depth. Technical modifications and errors excepted.

\* In the area of the side-mounted Loewe clip, the width of the TV set may increase by up to 1 cm, depending on the type of set.

# Loewe **stellar** alu black + lava

The craft design TV with Loewe dual channel dr+

## System components

### Loewe multi.room amp

Stereo amplifier for multiroom and homecinema installations with 1.200 watts total music power

#### Colour

 black



#### Model


multi.room amp

#### Article

61600

### Loewe klang bar5 mr

5.1.2 Dolby Atmos soundbar with wireless subwoofer and 800 watts total music power

 basalt grey




klang bar5 mr

60601

### Loewe klang bar3 mr

3.1 Dolby Atmos soundbar with integrated subwoofer and 360 watts total music power

 basalt grey



klang bar3 mr

60614

### Loewe klang sub5

Any number of klang sub5 can be connected to a klang bar3 mr or klang bar5 mr at the same time

 basalt grey




klang sub5

60603

### Loewe klang mr5

Wireless active speakers with 180 watts for multichannel home cinema or multiroom audio

 basalt grey




klang mr5

60606

### Loewe klang mr3

Wireless active speakers with 150 watts for multichannel home cinema or multiroom audio

 basalt grey




klang mr3

60605

### Loewe klang mr1

Wireless active speakers with 30 watts as rear surround or for multiroom audio

 basalt grey



klang mr1

60604

### Loewe remote klang mr

Multifunctional IR remote control for Loewe klang mr and Loewe klang bar to operate all basic functions and sound settings

 black



remote klang mr

74000



# Loewe **stellar** alu black + lava

The craft design TV with Loewe dual channel dr+

---

Additional information

---

www.loewe.tv



my Loewe app



Your Loewe contact

We are happy to help personally.

Our Loewe Customer Care Center is here for you:  
Monday to Friday 09:00 – 17:00 o'clock  
ccc@loewe.de | 0049 9261 99 500

Your Loewe dealer

